

TERRAMIN

WINZEMASTER XL

DOUBLE ACTING DIAPHRAGM PUMP



**50mm
CONE VALVE
AIR DRIVEN
DOUBLE
DIAPHRAGM
PUMP**

APPLICATIONS:-

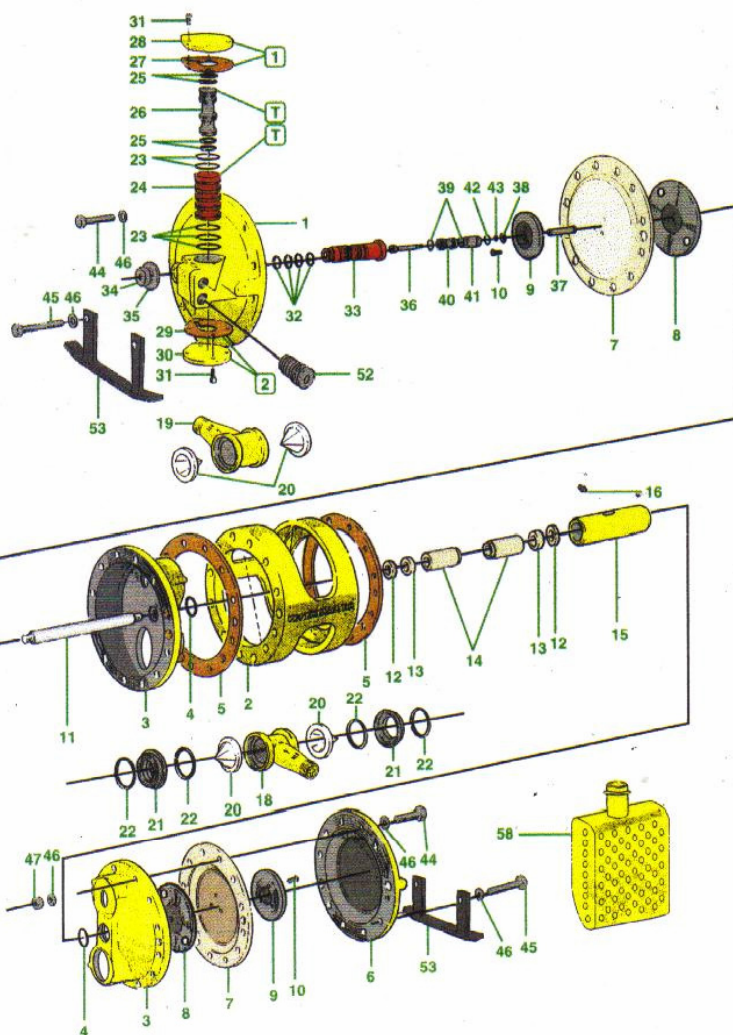
- For general mine dewatering purposes:
- Winzes
- Development
- Haulages
- Mud Pumping (Flowable)
- Semisolid Medium Pumping
- Diamond Drilling
- Supplementary Water Pressure

FEATURES:

- Robustly designed with thick walled aluminium castings to withstand rough handling underground.
- Castings can in most cases be reconditioned.
- 100% South African manufactured
- Polyurethane diaphragms and cone valves for durability.



MADE IN SOUTH AFRICA

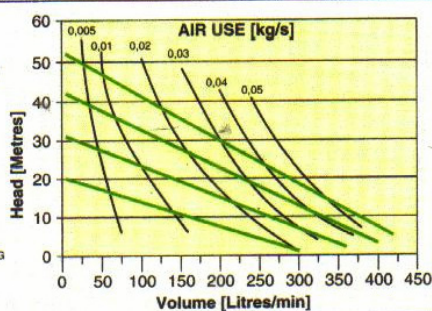


ITEM No.	PART No.	DESCRIPTION	QTY
1	169276	Top Cover (COV)	1
2	169328	Shroud	1
3	XL169332	Housing plate	2
4	XL335677	O-ring (house plate)	2
5	335650	Spacer gasket	2
6	169278	End cover	1
7	335618	Diaphragm	2
8	XL169286	Bottom backup plate	2
9	169013	Top backup plate	2
10	335815	Countersunk screw	6
11	XL169333	Connecting rod	1
12	XL330017	Wiper seal	2
13	XL335697	Lip seal	2
14	XL335580	Connecting rod bush	2
15	XL169334	Seal Housing	1
16	XL330022	Grease Nipple	1
18	169329	Inlet port	1
19	169330	Outlet port	1
20	335692	Non return valve	4
21	169331	Inlet port spacer	2
22	334112	O-ring (inlet spacer)	4
23	335062	O-ring (main sleeve)	5
24	169083	Sleeve (main)	1
25	335052	O-ring (main shuttle)	4
26	138280	Shuttle (main)	1
27	168514	Gasket (1)	1
28	168513	End cap (1)	1
29	168550	Gasket(2)	1
30	168512	End cap (2)	1
31	335055	Screw (End cap)	8
32	333574	O-ring (sec sleeve)	4
33	168510	Sleeve (secondary)	1
34	335649	Nut (second sleeve)	1
35	335055/1	Locking washer	1
36	169710	Shoulder screw	1
37	169017	Actuating rod	1
38	335053	Circlip (actual rod)	1
39	330598	O-ring (sec shuttle)	2
40	168509	Shuttle (secondary)	1
41	168511	Bush (secondary)	1
42	331276	O-ring (bush outer)	1
43	330558	O-ring (bush inner)	1
44	335183	Bolt Galv (casing)	20
45	335876	Bolt Galv (stand)	4
46	334692	Washer Galv	48
47	330011	Nut (casing)	24
52	335247	Muffler	1
53	169293	Stand - small	2
58	8000	Water inlet screen	1

PUMP CURVE



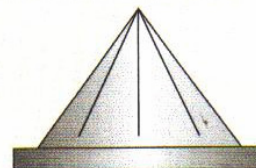
DEPARTMENT OF MECHANICAL ENGINEERING
STELLENBOSCH UNIVERSITY



SPECIFICATIONS

MODEL: WINZEMASTER
 WEIGHT: 48 kg
 MATERIALS OF CONSTRUCTION: Aluminium
 SUCTION INLET: 50mm
 DISCHARGE OUTLET: 50mm
 AIR INLET: 25mm
 AIR EXHAUST: 25mm
 PERFORMANCE: SEE PUMP CURVE

POLYURETHANE CONE VALVE



ABS Indonesia
 A Total Solution Service System

PT. AUSTRALIAN BELT SCRAPER INDONESIA
 Jalan Cihampelas 48B, Bandung 40116,
 West Java, Indonesia
 Phone +62 (22) 4264000
 Fax +62 (22) 4232694

marketing@absindo.com
www.absindo.com